

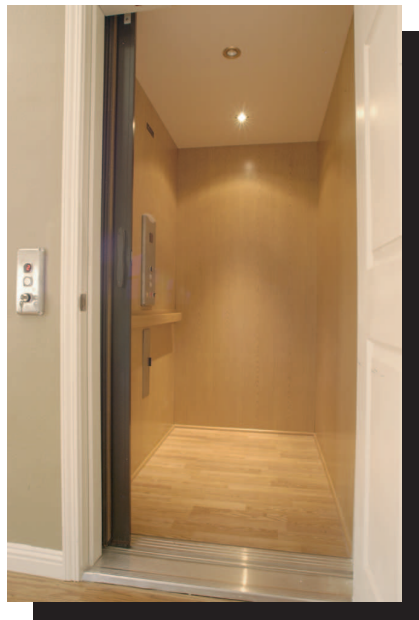
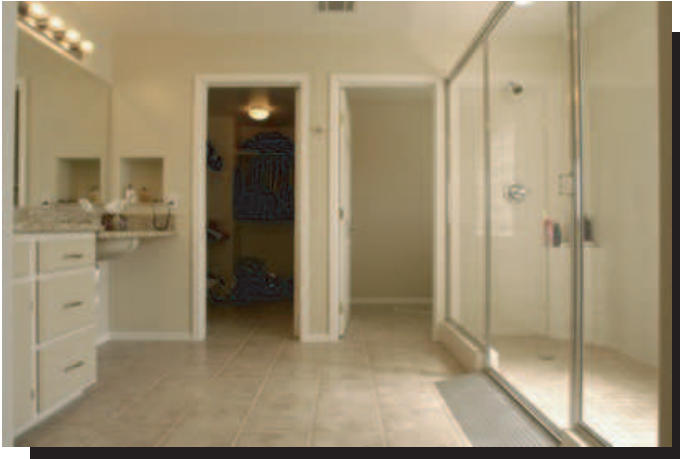


Enhanced Living Design
AN ACCESSIBILITY AND CONSTRUCTION COMPANY

CaseStudy

A featured Enhanced Living Design project

CA Lic# B-874609



- **Elevator**
- **Hardwood flooring**
- **Concrete ramping**
- **Bathroom modifications**

■ This is a patient right from the headlines, a young law enforcement officer who finds his whole life changed in one horrific on-the-job event. Grateful to be alive, he and his family must still contend with the new challenge of adapting to life in a wheelchair as a tetraplegic. The loss of mobility meant that he and his family would have to make many changes in their life including adapting their house to accommodate his special needs.

Initially, we were called in due to the comprehensive nature of the modifications required. However, It was soon apparent to the case advisor that transitioning him and his family required more than just the installation of access and mobility devices and house modifications. This family needed a break from change. His wife and two young daughters were still in shock and would need every bit of help we could provide.

So, while ensuring that we met or exceeded ADA standards, we made it a priority to have any modifications blend-in with the architecture and decor of their new home as much as possible. We carefully matched their decorative concrete for wheelchair ramps instead of using external aluminum models. We carefully selected materials such as durable hardwood flooring, granite countertops, and decorative ceramic tile. Even the installation of an elevator was designed to maximize his independence while maintaining the architectural integrity of the house. All features were designed to be virtually unnoticeable... to look like any other house on the street.... to ease the burden of change.

Whether it's taking the extra time to create a unique solution, understand patient needs or just finding a way to minimize the impact of the lifestyle change, even just visually, we are here to help.

We don't just remodel, we build to enhance lives.

Enhanced Living Design
27 Spectrum Pointe, Suite 306
Lake Forest, CA 92630
Ph: 800.598.9181
Fax: 800.598.9182
info@enhancedlivingdesign.com